

ACRIN 6677 Raw MRS Data Handling Instructions - GE

How to save and transfer p files from GE scanners.

1) How to make sure that p-files will not be overwritten.

On the MRI console, go to the **Browser**

Right mouse-click on the background

A scroll down window appears, select **Service tools** and ⇒ **Command Window**

In the terminal window that pops up type: **cd /usr/g/mrraw** (this is the directory in which all p-files are temporally stored)

Type: **ls -ltr** (this command lists all p-files including time stamps in chronological order)

Type: **mkdir backup** (this generates a backup folder in which p-files can be stored, this only needs to be done once)

Type: **cp Pxxxxx.7 backup** (this command copies the p-file in your backup directory. The x's represent the 5 digit code for the p file you are interested in.)

Type: **cd backup**

Type: **mv Pxxxxx.7 PatientID.date.Pxxxxx.7** (this command renames your p file, this way you make sure that the file will not be overwritten during later experiments.)

2) More importantly, how to transfer the p-files

You can use any PC with a network connection to transfer the p-files.

The easiest way to transfers the files is by using a program called **winscp** which can be downloaded from <http://winscp.net/eng/index.php> for no charge.

Open the program and setup:

Host name: **IP address** of your MRI scanner

Login and password will be likely **sdcc** and **adw2.0**

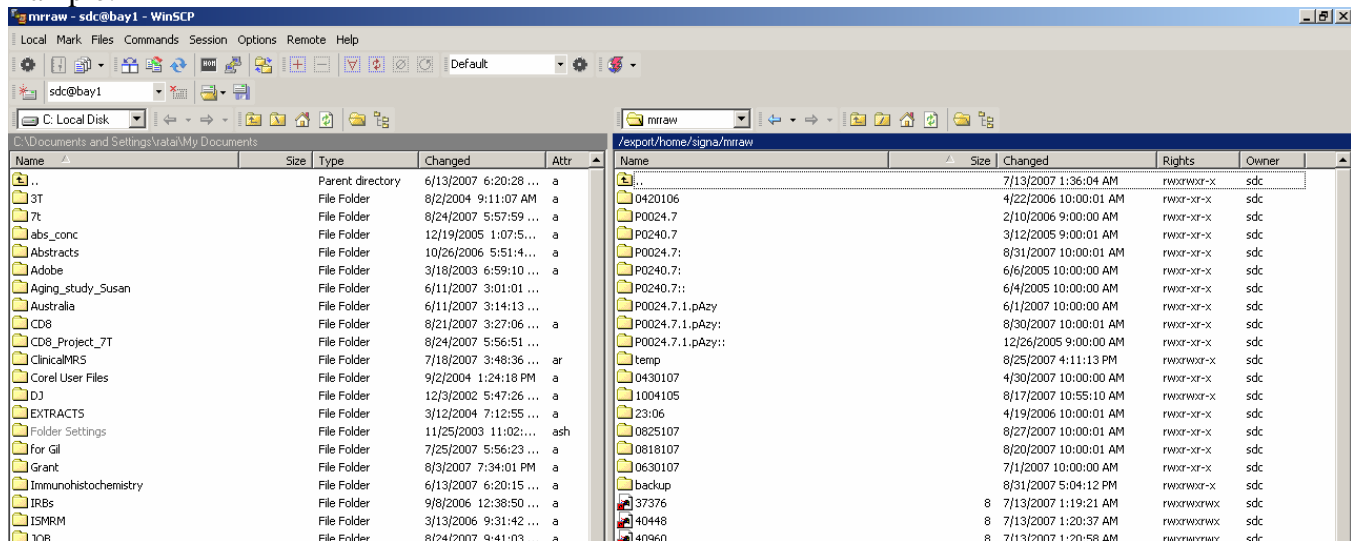
Login: **sdcc**

Password: **adw2.0**

Protocol: **SFTP** (allow SCP fallback)

On the right side you see your scanner's directory and on your left side your own computer's directory

Example:



Change the directory on the right site to **/usr/g/mrraw/backup**

Transfer the p-files from that directory to your computer by clicking on the file, then **drag it** to a designated data storage folder on your computer (to the left). A window will pop up, select the option to copy.

Done!

BTW, once you have setup that connection you can save the session and you do not need to remember the IP address, login and password anymore.

Go to session, save session type in scanner name.

Next time you want to transfer files you can load the session.

Sending the File to ACRIN

1. Rename P file to “*ACRINCase#, TimepointXweeks*”
 - For example: *case15_baseline* OR *case09_16weeks*
 - *Again, this MUST be the ACRIN CASE NUMBER assigned at registration.*
2. The file will be sent to ACRIN via ftp. NOT using Preview, which is for the transmission of DICOM data only.

- 1. On your web browser, go to <ftp://xray.acrin.org>**

User Name: manual6677

Password: spectra

(If not prompted, click file, “Login As...”)

- 2. Find your folder:**

- It will be identified by your ACRIN Institution Number _ followed by a three-letter abbreviation for your site.
 - Contact Jim Gimpel at ACRIN at jgimpel@phila.acr.org for assistance

- 3. Store your file in the folder:**

(BE SURE YOU HAVE NAMED IT as Case#,Timepoint)